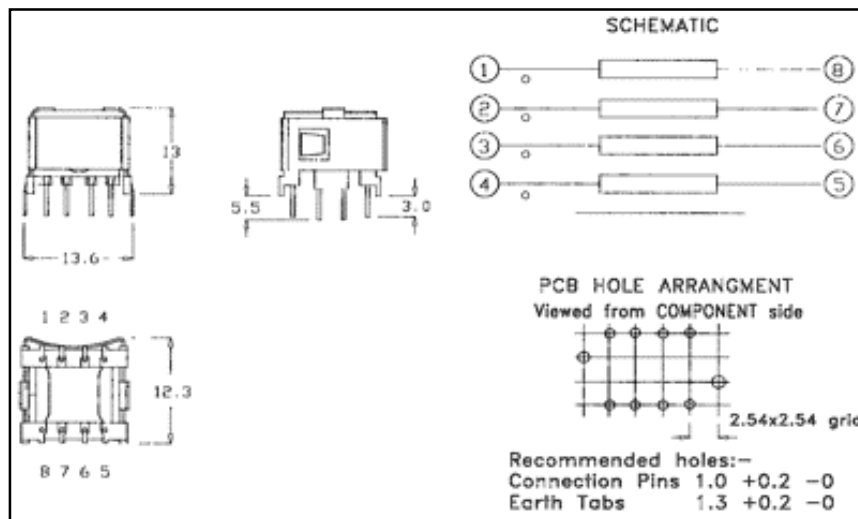


## QUAD CHOKE

# 02928

A 4 winding common mode choke designed to suppress EMI when used in series with Primary Rate T1 or CEPT lines.



Parameter	Conditions	Value
Inductance	Each winding	0.2mH $\pm$ 30%
Turns ratio	1-8 : 2-7 : 3-6 : 4-5	1 : 1 : 1 : 1
DC Resistance	Each winding	50m $\Omega$ max
Winding to winding Isolation test.	-	500V DC

# Best

Information for guidance only, specification subject to change. © 2007 Best Windings Ltd.

Best Windings Ltd, Viking Works, 7 Bucklesham Road, Kirton, Ipswich, Suffolk, IP10 0NX, UK.

Telephone: +44 (0) 1394 448424

Fax: +44 (0) 1394 448430

Website: [www.bestwindings.co.uk](http://www.bestwindings.co.uk)

Email: [sales@bestwindings.co.uk](mailto:sales@bestwindings.co.uk)